

Smart Plug In

for

MySQL Databases

for HP Operations Manager UNIX and Windows

Datasheet

Version 2.0

TCO Savings by

■ Central Management

The integration of MySQL Database monitoring into the central management of networks, systems, and applications enables consolidated management across the complete IT Environment according to the IT Business Processes and Rules.

■ Availability and Productivity

The pro-active monitoring, real time alerting, and immediate intervention increases the Availability and Productivity by avoiding of problems and faster resolution times.

■ Performance and Efficiency

Based on the My SQL runtime behaviour the SPI intelligence generates advices and proposals that enable the MySQL Administrators to quickly resolve problems and optimize the performance. Additional metrics support the capacity planning process.

■ Security Monitoring

The SPI provides detection and alerting for security relevant changes like privilege changes, configuration changes or database layout changes.

■ Business Process Monitoring

Customizable monitors can be used to track and measure critical steps of the business processes that involve the database like order entry rates, queue table lengths, etc.

■ Service Quality Proves

The collected information and metrics deliver the base for comprehensive evaluations and proves of the achieved Quality of Service.

Management Server



Events, threshold alerts, performance data



MySQL SPI
OM Agent
MySQL Server

Evaluate the latest SPI version
<http://blix.com/products/downloads.html>



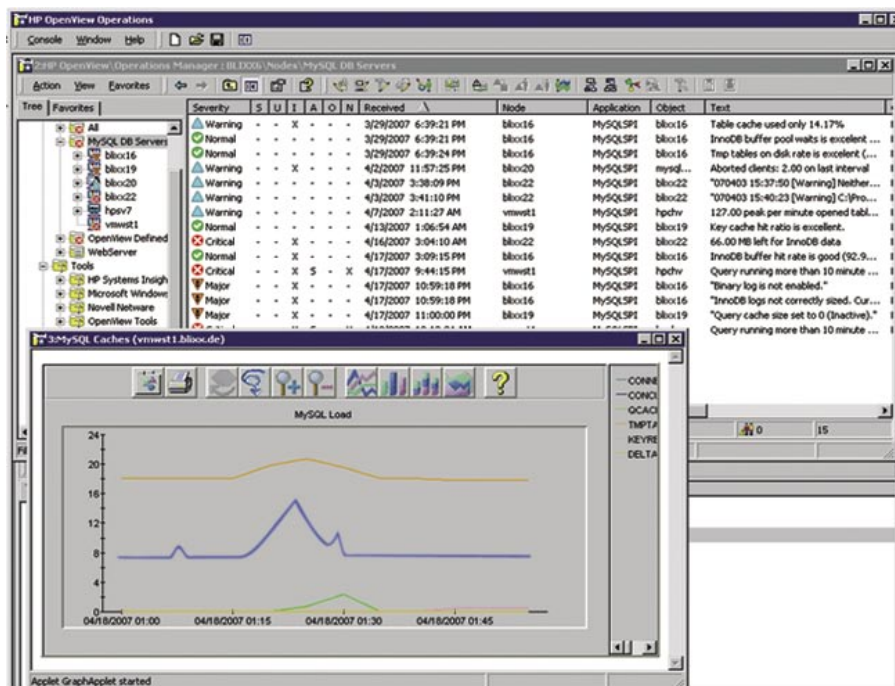
Smart Plug In for MySQL Databases

for HP Operations Manager UNIX and Windows



Key Features

- Operations Manager for Unix and OM for Windows support.
- Support for a wide range of platforms (Windows, Linux, HP-UX, SunOS).
- Support for multiple Versions of the MySQL Database (v4.1 and later).
- Support of multiple MySQL database server instances running on the managed node.
- Easy and fast deployment and configuration.
- Flexible and powerful Collector Engine.
- Calculation of Average, Peak, Delta values.
- More than 50 raw and aggregated performance metrics available.



- Detection of suspicious configuration and runtime values.
- Detection of security relevant Events.
- Status and Resource Monitoring.
- Logfile Monitoring
- Performance data collection for data correlation, thresholding, trending, reporting.

- Configuration change monitoring with alerting, change tracking and comparison.
- Support of the capacity planning process with additional data.
- Performance data logging to structured files for flexible integration possibilities.

Covered Areas

- MySQL Database Server Status Metrics.
- Database Resource Utilization.
- System Resource Utilization.
- Database KPIs (Key Performance Indicators).
- Supporting Database Metrics for advanced correlations.

- Configuration sanity checks.
- Active replication monitoring to measure and alert on replication delays.
- RowCount monitor to track queue tables.
- Automatic detection and capture of long running queries.

- Customizable Business Process Monitoring with data collection and thresholding for response times and returned value.

Supported Platforms and Servers

- HP Operations Manager on HP-UX, Sun Solaris, Windows
 - HP OM Unix v7.1, v8.x (DCE and HTTP based agents)
 - HP OM Windows v7.5, v8.1 (7.x and 8x based agents)

- Operating Systems for MySQL Server
 - Windows XP Professional, Vista
 - Windows 2003/2008 Server
 - Linux RedHat, Novell-SuSE and other Linux Distributions (according to the OM Agent Support Matrix)
 - HP UX
 - SUN Solaris

- MySQL Databases
 - MySQL Database 4.1
 - MySQL Database 5.0
 - MySQL Database 5.1



blixX GmbH
Schmiedstraße 17
71116 Gärtringen
Germany

www.blixX.com
fon: +49(0)7034/25456-0
fax: +49(0)7034/25456-9
email: s_pannenberg@blixX.de

HP Partnerlink:
http://managementsoftware.hp.com/partner/isv/blixX_prod.1.jsp
MySQL Partnerlink:
<http://solutions.mysql.com/solutions/item.php?id=300>

